



Sun HongPaper Tech Xuzhou
信航纸业科技徐州有限公司

Technology as The Root, Quality-oriented

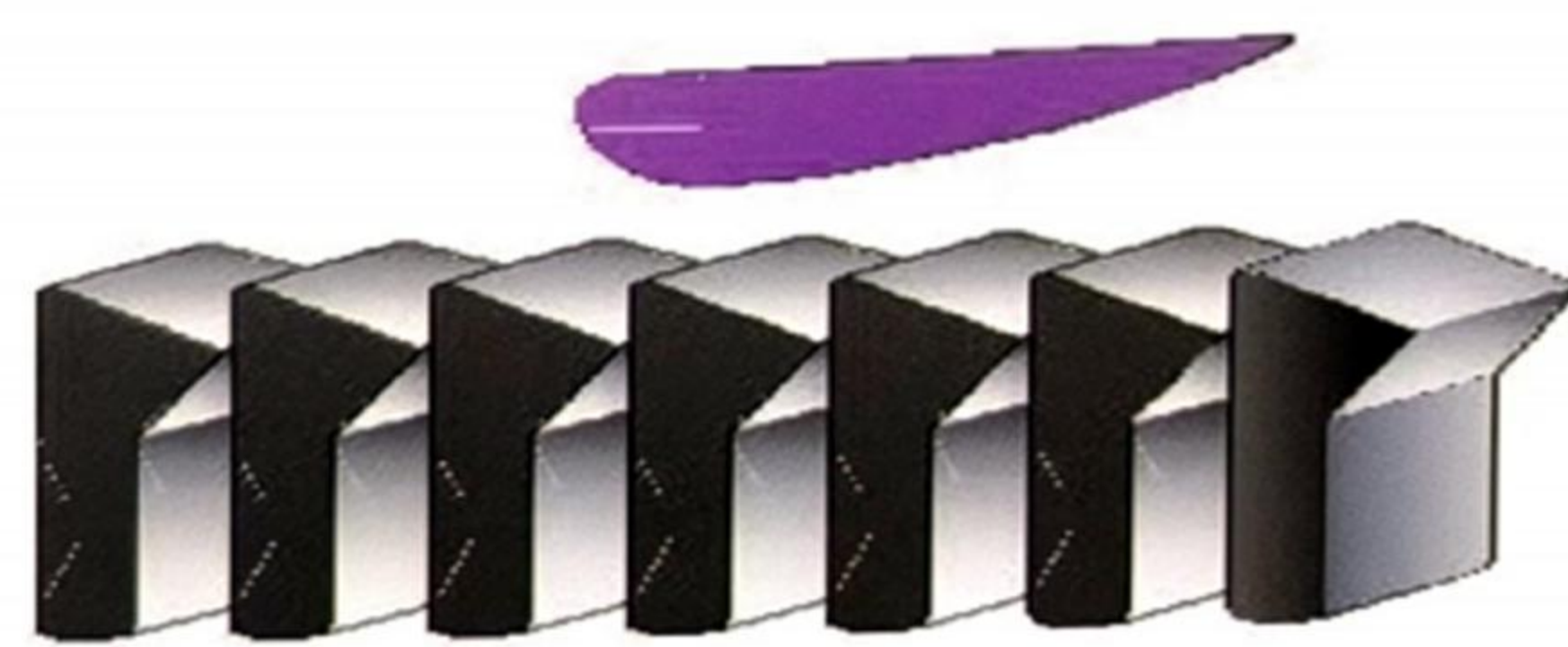
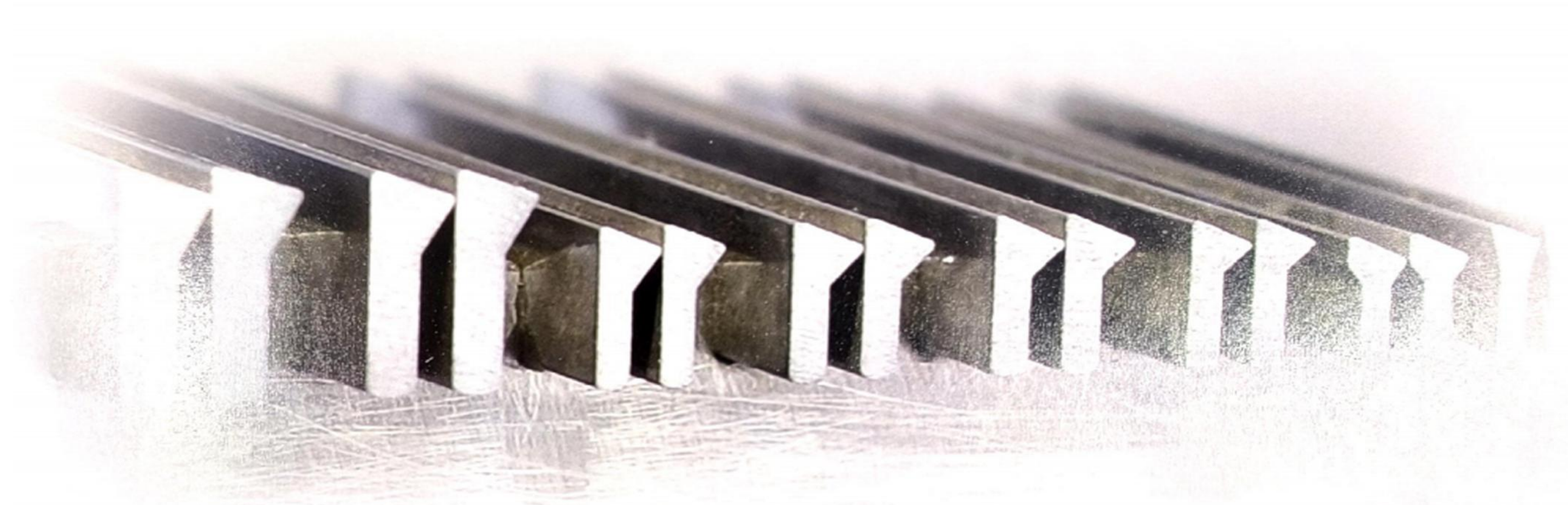
筛鼓、筛板高品质制造商

HIGH-QUALITY MANUFACTURER OF
PRESSURE SCREEN BASKET, ROTOR
AND PLATES

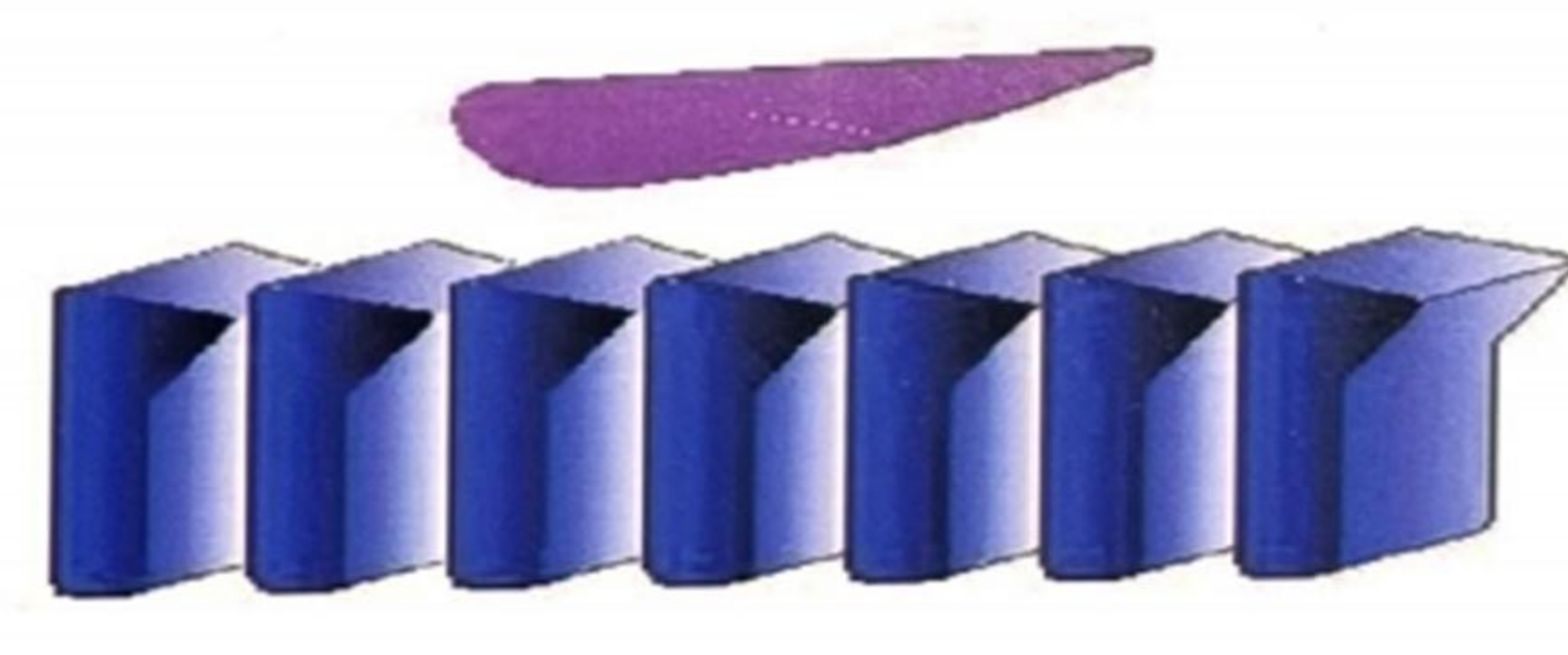


Whatsapp: +86 13951349332
Email: info@sunhongco.com

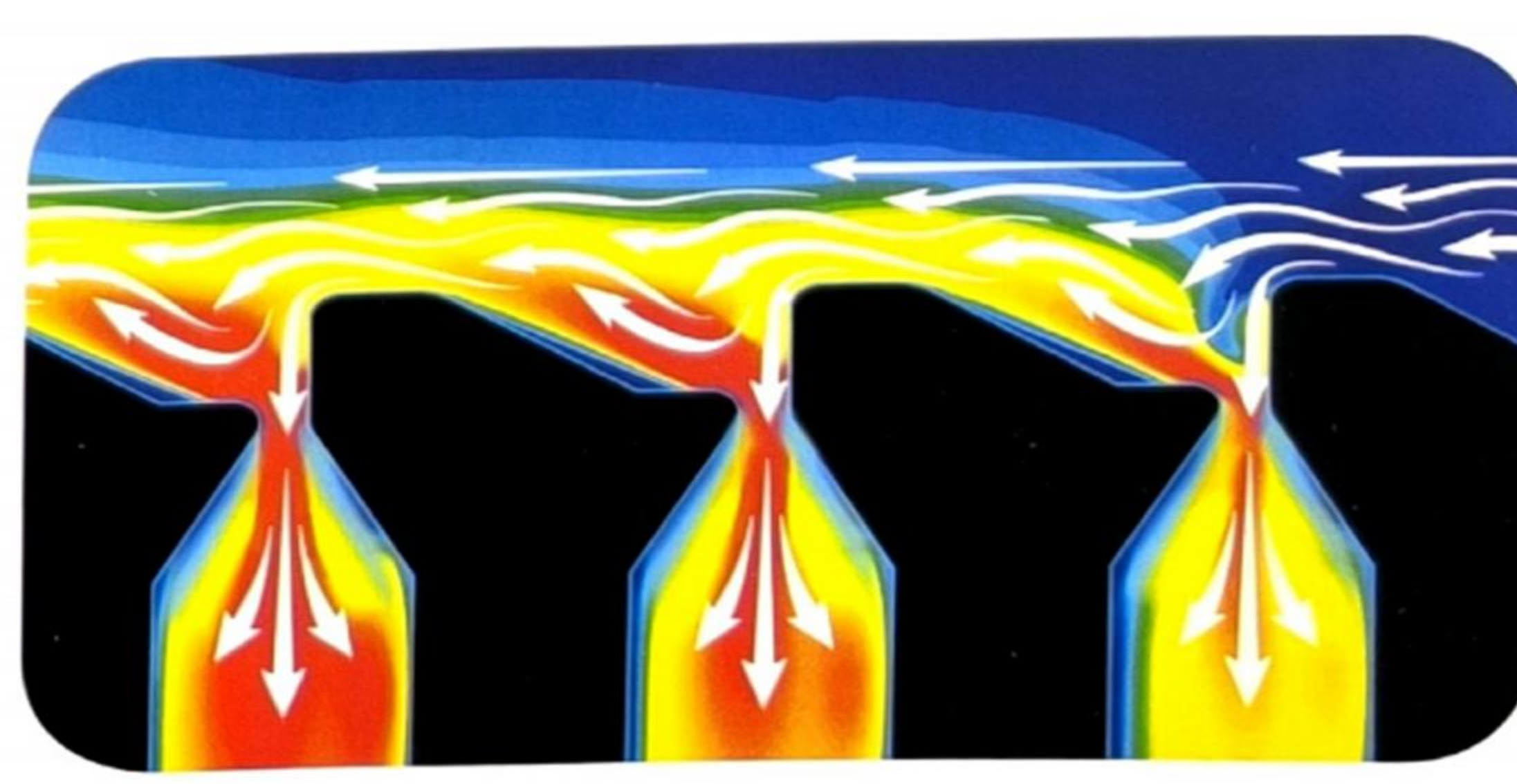
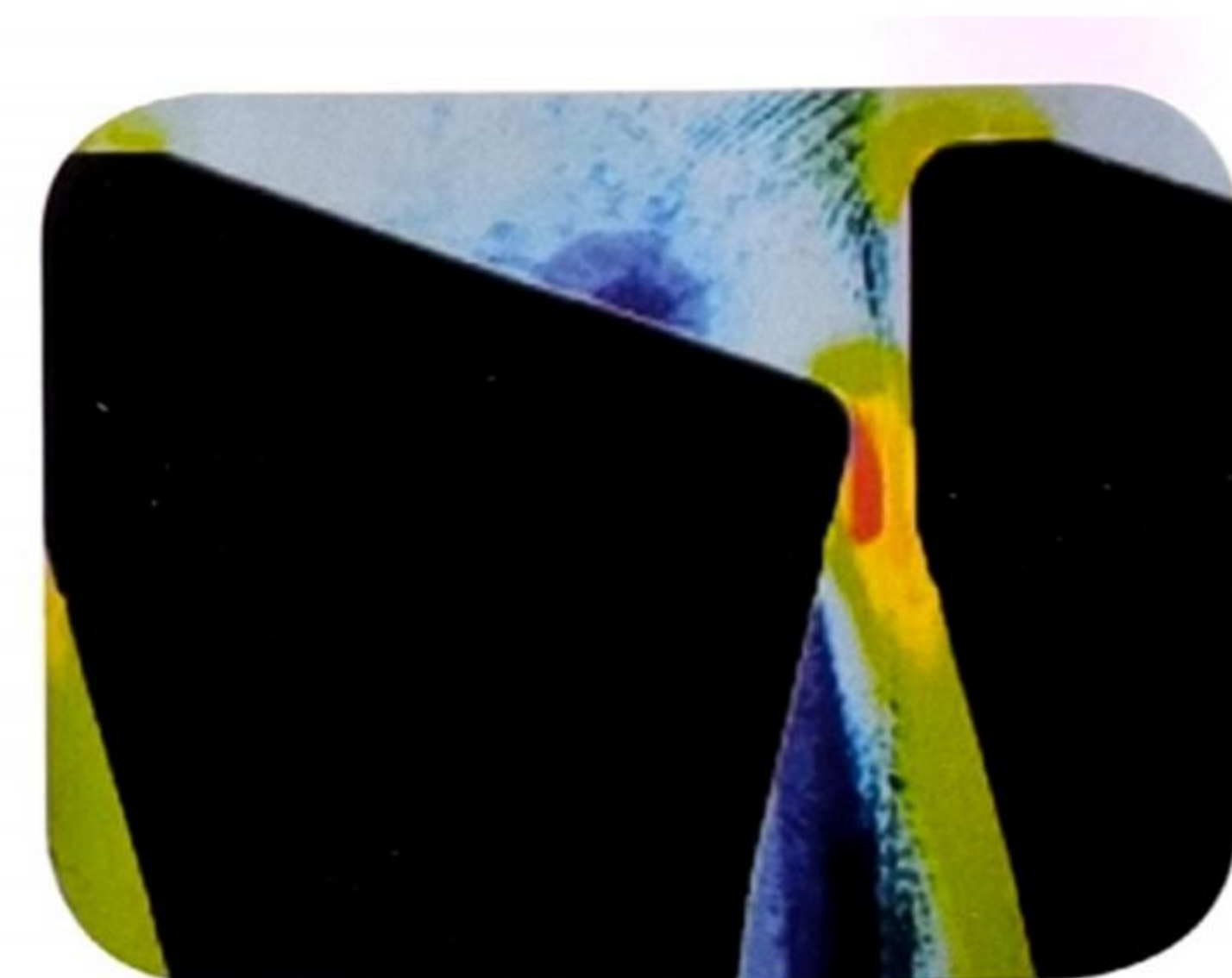
Appropriate rod geometry and maximum aperture ratio can effectively increase the efficiency of screening equipment and reduce its power consumption.



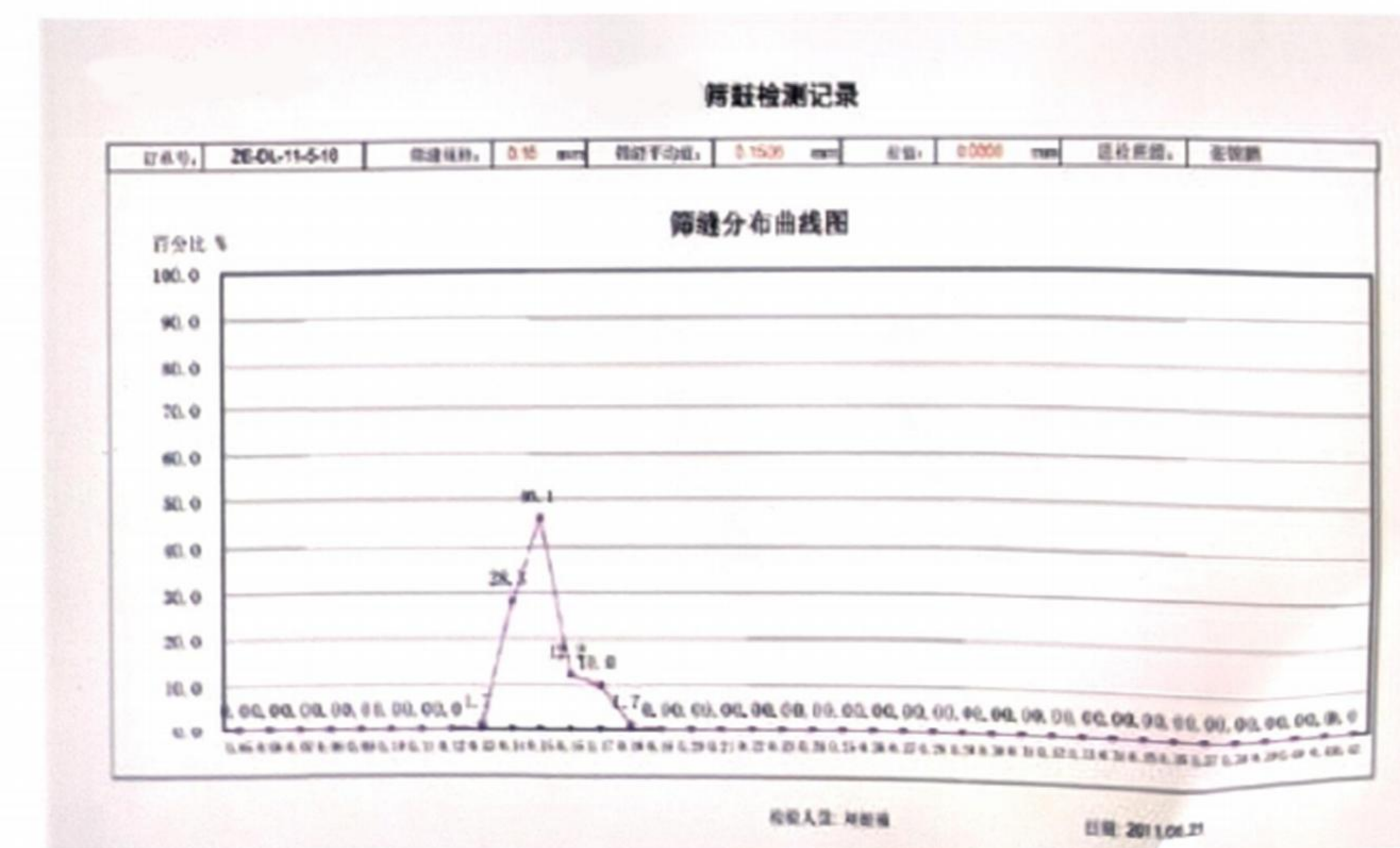
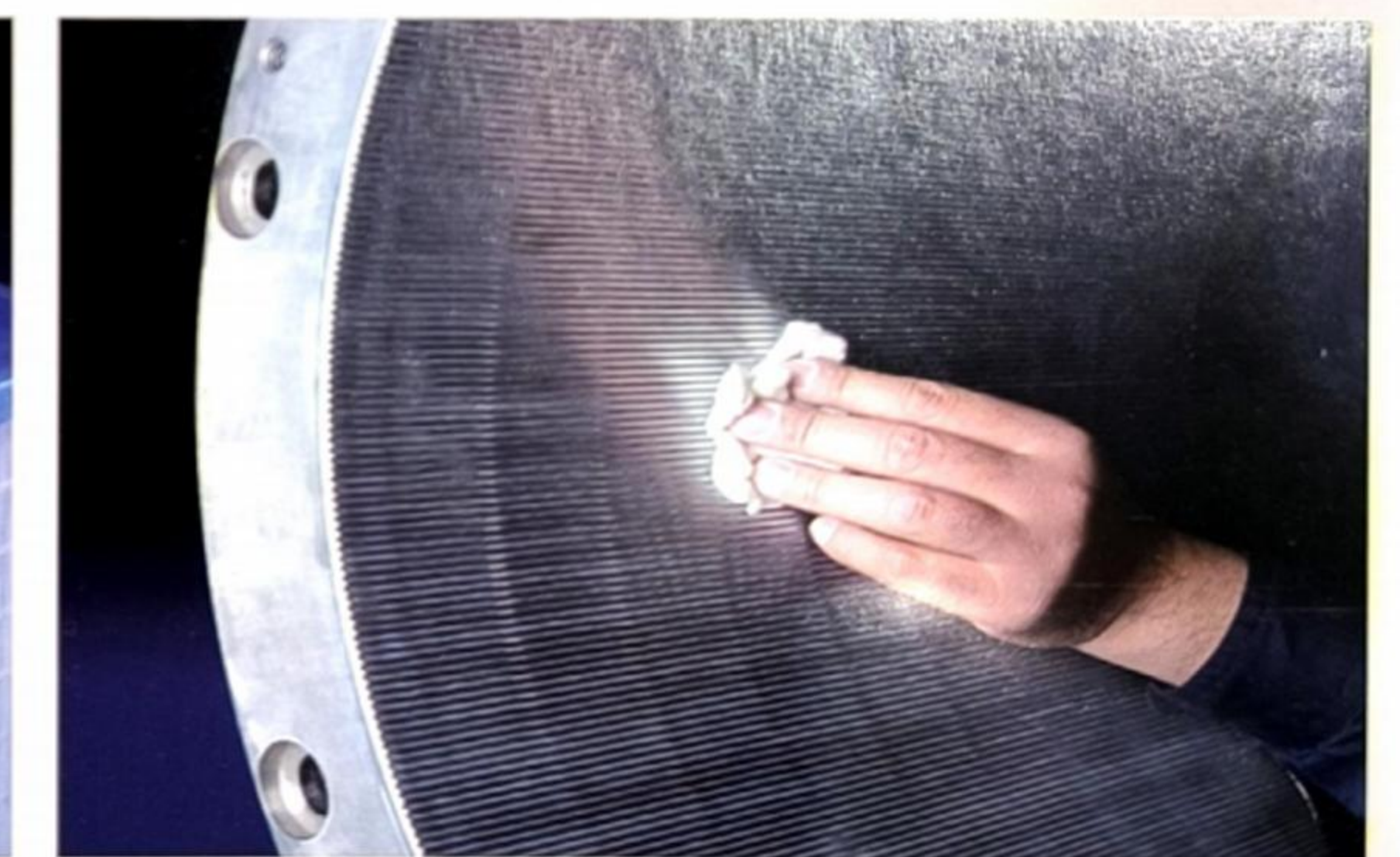
Large Ripples, Strong Turbulence



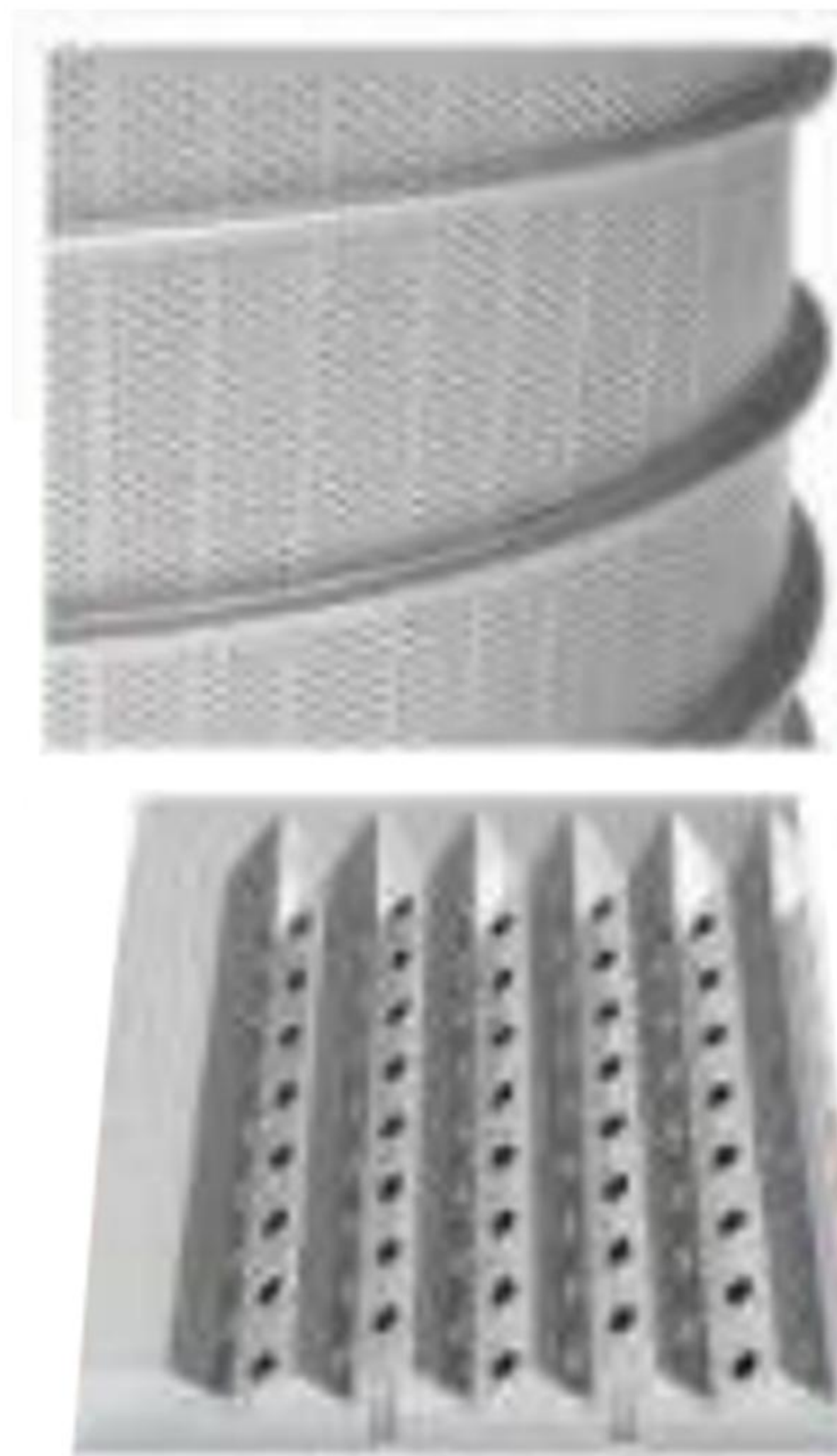
Small ripples, Weak Turbulence



Fine Working



Technology as the root
Quality-oriented

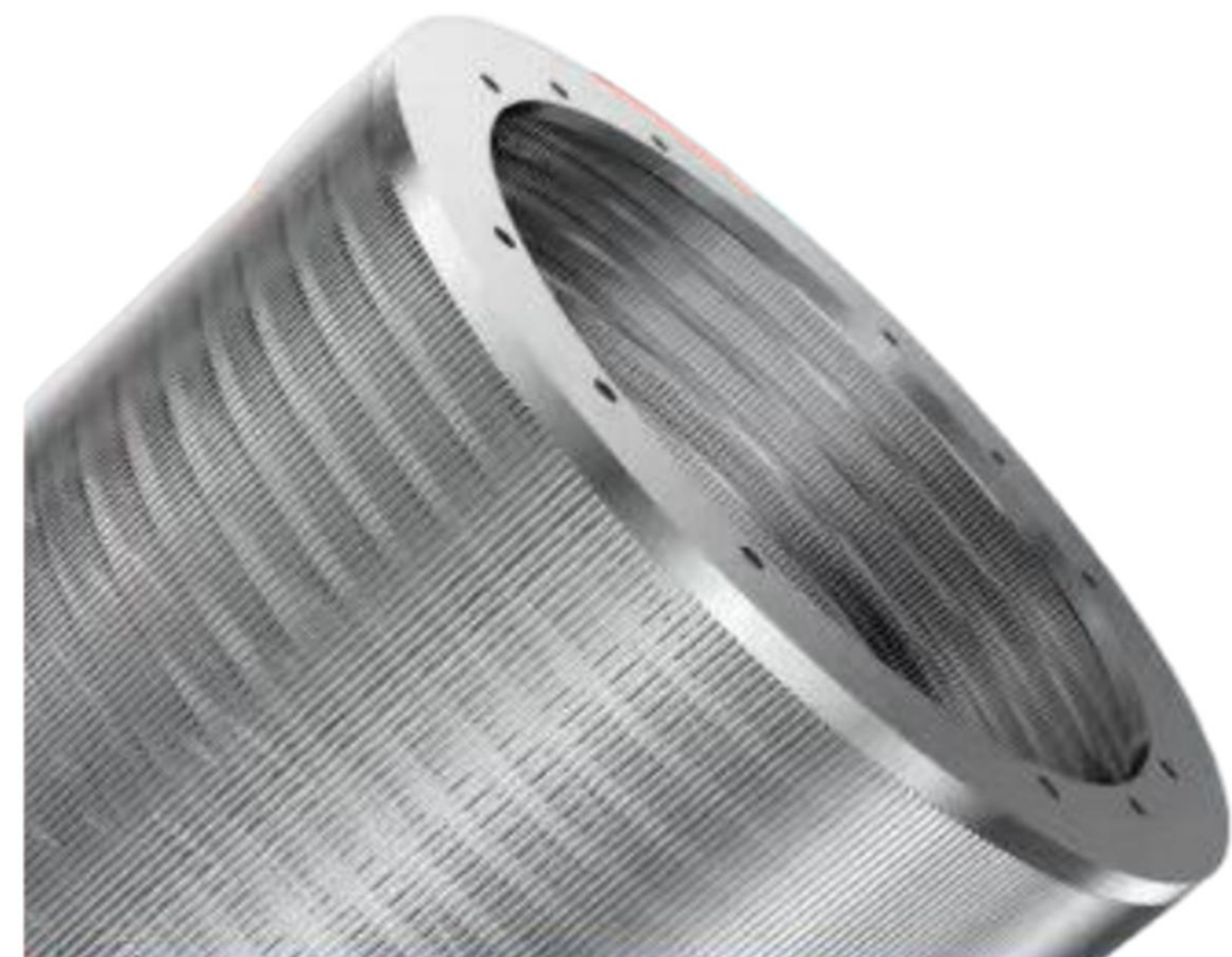


Drilled Screen Basket

1. Generally used in pulp roughing and tailings treatment sections, it can effectively remove impurities such as sand and gravel, metals, glass, undissolved large fiber clusters, plastics, shredded paper, etc. from pulp.
2. This type of screening drum has the characteristics of high output, long service life, stable operation, and strong dredging ability.
3. Corrugated holes, flat holes, or other composite styles can be configured according to the manufacturer's operating conditions. The holes can be processed in straight holes, tapered holes, stepped holes, and other styles.
4. After the screening drum is processed, it undergoes multiple polishing processes to ensure that the sieve holes are smooth without sticking pulp.

Inflow Slotted Screen Basket

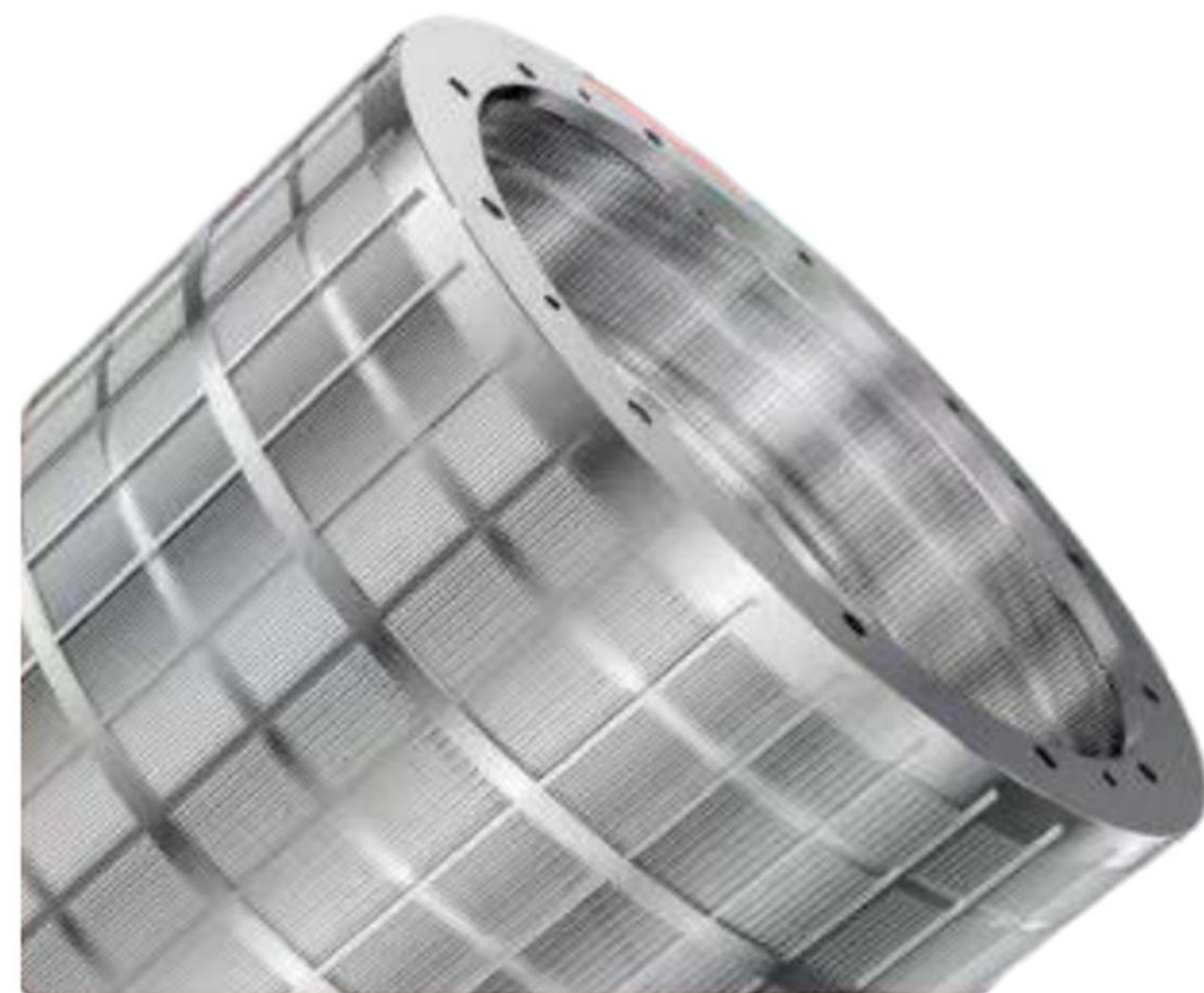
1. It is generally used in pulp fine screening and previous mesh screening sections.
2. This type of screening drum has the characteristics of low pulse and low energy consumption during operation.
3. We can configure the most suitable rod according to customer parameters such as raw materials, production paper types, and processes, to meet the screening needs of different pulp materials.
4. The bars are rolled and imported from abroad to ensure material and accuracy. The reinforcing ribs are cut by imported laser cutting, which has fast processing speed, high accuracy, short screening drum production cycle, and small gap width deviation.
5. The company has an independent electroplating workshop and mature electroplating technology, with good chrome plating quality to ensure the service life of the screen drum.





Outflow Slotted Screen Basket

1. The screening drum is divided into downflow and upflow types.
2. This type of screening drum can be used to remove very small waste impurities, adhesives, hot melt materials, spots, etc. It can be used in pulp roughing, grading screening, fine screening, tailings screening, and even pre screening stages.
3. The most suitable rod can be configured according to customer parameters such as raw materials, production paper types, and processes to meet the screening needs of different pulp materials.
4. The bars are rolled and imported from abroad to ensure material and accuracy. The reinforcing ribs are cut by imported laser cutting, which has fast processing speed, high accuracy, short screening drum production cycle, and small gap width deviation.
5. The company has an independent electroplating workshop and mature electroplating technology, with good chrome plating quality to ensure the service life of the screen drum.



Milled Slot Screen Basket

1. Can be used to screen wood pulp, cotton pulp, hemp pulp, synthetic fibers, and various mixed pulp types.
2. The company independently designs screening drum production parameters based on customer needs and process conditions to meet the stringent requirements for screening efficiency.
3. In addition to mechanical polishing, the surface of the screening drum is also subjected to electrochemical polishing treatment to achieve a smooth and non hanging surface in any part.



Knot Screen Basket

1. Suitable for rough selection sections such as wood pulp, bamboo pulp, and wheat straw pulp.
2. It can effectively remove impurities such as sand and gravel, metals, plant nodules, and unevaporated debris from the slurry.
3. This type of screening drum has the characteristics of high yield, long service life, stable operation, and the ability to operate at higher concentrations.
4. The sieve holes are processed by CNC and laser, and the sieve drum has a short processing cycle and high accuracy.
5. We can optimize the parameters of corrugations and sieve holes according to the actual operating process parameters of the customer, in order to maximize customer satisfaction.
6. The company has an independent electroplating workshop and mature electroplating technology, with good chrome plating quality to ensure the service life of the screen drum.



Screen Frame

1. Generally used in tailings screening, fiber recovery, dehydration and other sections.
2. It has the characteristics of low operation cost, simple operation, and easy installation.



Screen Plate

1. Our company can produce screen plates for pulpers, hydraulic cleaning machines, single effect fiber separators, and skip screens.
2. The sieve plate can be processed or specially treated according to the material selected by the customer.
3. The sieve plate is processed by CNC and laser, and the sieve drum has a short processing cycle and high precision.
4. The sieve holes are optimized according to the customer's working conditions, and the holes are not easily clogged.
5. After the sieve plate is processed, it undergoes multiple polishing processes to ensure that the sieve holes are smooth and free of slurry.



Pressure Screen Rotor

Rotor function: The rotation of the rotor of the rotor will generate pressure pulses, which help to flush the accumulated fiber layer on the screen drum, thereby ensuring the smoothness of the screen drum and the efficiency of screening.

1. Our company designs, manufactures, and repairs various types of pressure screen rotors.
2. Tailored the most suitable rotor form for customers based on the process location used for pressure screening and the selected raw materials.
3. Based on the customer's on-site process conditions and overall configuration, design and optimize rotor blades for the customer to make the rotor more efficient and energy-saving.
4. We can repair the rotor and replace the blades for customers, and the performance of the repaired rotor will be consistent with the original new rotor, reducing the cost of use for customers.



Impeller

The function of the impeller: The rotation of the impeller sucks in the slurry in the tank along the axis center and throws it out at high speed from the circumference, forming a violent turbulent cycle. The tearing effect of the impeller and the friction between the slurry layers at different speeds generate a huge frictional effect, causing the slurry to strongly disperse and separate fibers in the wet state.

1. Our company designs, manufactures, and repairs various types of impellers for pulpers, hydraulic cleaning machines, single effect fiber separators, and extruders.
2. According to fluid mechanics analysis, the impeller style has been optimized, and the developed impeller has the characteristics of high pulping ability, good pulp dewatering effect, and low power consumption per ton of paper.
3. The wear-resistant parts of the impeller are made of wear-resistant materials to extend the service life of the impeller and reduce the cost of use for customers.



